



15F2862

Covered Pallet Trailer



Building Quality Ground Support Products Since 1961

- Cargo capacity 15,000 lbs
- Trailer capacity
 - LD1, 2, 3, 4, 7 & 8
 - 88"x125", 96"x125", 88"x108" pallets
- Protected lead on rollers / casters mounted in protected cross members
- Tine way openings protect casters from forklift damage
- Recessed frame to protect customer markings
- Towbar actuated self adjusting rear brakes
- 4.00 x 8, 3 stage solid tires on 7 ga. rims
- Front dual wheel swivel caster steering
- E-type spring loaded hitch
- Durable powder coat finish

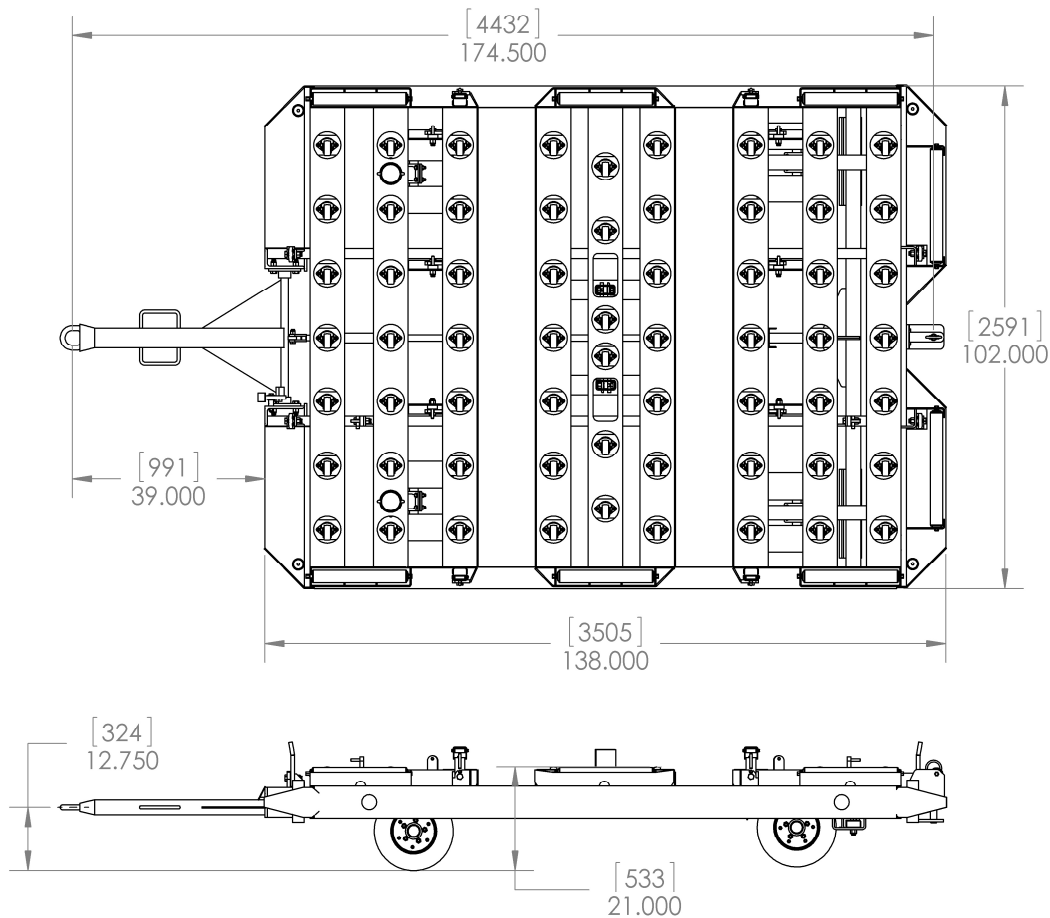
CLYDE

Clyde Machines
P.O. Box 194
1150 Hwy 55 N.
Glenwood, MN 56334 USA
(320) 634-4504
(320) 634-4506 Fax

www.clydemachines.com

15F2862

Covered Pallet Trailer



Shipping Information

- Shipping Dimensions:
 - Weight - 2,640 lbs.
 - Length (towbar up) - 138"
 - Length (towbar down) - 179"
 - Width - 102"
 - Height - 20 1/2"

CLYDE

Clyde Machines
P.O. Box 194
1150 Hwy 55 N.
Glenwood, MN 56334 USA
(320) 634-4504
(320) 634-4506 Fax

www.clydemachines.com